



# Into the Garden

The Gardeners' Club  
Santa Cruz County,  
California

**JUNE 2023**

Writer/Editor: Lise  
Bixler ([lisebixler@sbcglobal.net](mailto:lisebixler@sbcglobal.net))

## FLOWER ARRANGING TOGETHER!

Flower arranging as a group, with friends? How much fun will that be? Some of us are skilled and experienced, and some of us don't have a clue. But all of us who have enthusiasm can share the experience of putting together the gifts of our gardens into arrangements and bouquets to enjoy at home, or give to others.



Bring fresh cut plant materials to share. Flowers, grasses, branches, fruiting stems, ferns, budding growth, leaves, pods, nuts, seeds, attractive veggies—sky's the limit. We suggest bringing your materials in buckets in water. Bring scissors or clippers as well, and if you have frogs or florist tape (a lattice of tape makes a fine base for arranging flowers). Bring vases or other receptacles for arranging flowers and other garden materials—or, take from our accumulation of vases, free for this event.

Take your arrangement home in your bucket, or bring a box lined with newspaper to get it home safely. We will have the Plant Table as usual, so bring what you have to share and trade.

**Thursday, June 8th, 7-9 p.m.**  
**APTOS GRANGE, 2555 MAR VISTA DR., APTOS**

**LET PEOPLE KNOW ABOUT OUR EVENT BY POSTING ON YOUR NEIGHBORHOOD FACEBOOK PAGE! BRING FRIENDS—NEW MEMBERS WHO SIGN UP WILL GET A FREE PLANT!**







What's in bloom in the nursery right now — Salvias, Agastache, Gaillardia, Verbena, Erigonum giganteum in the background just coming into bloom.

**PICKELBERRY FARM SALE**  
*Featuring*  
**PLANTS FOR POLLINATORS**  
**SATURDAY JUNE 10**  
**9AM-1PM**

Next to Alta Organic Coffee, 2712 Mission Street Ext., Santa Cruz. Next door to the Westside Farmers Market, between Swift St and Western Dr and across the street from the Wrigley Building.

Pickelberry Farm is a small scale home nursery in Northern Monterey County focusing on growing plants to enhance your gardens habitat for native and honey bees, hummingbirds and butterflies.

All plants are grown using sustainable and organic nursery practices and have been selected to be well suited to grow in central coastal California. We grow both California natives and non natives, annuals and perennials and are endeavoring to provide a variety of plants that have bloom times throughout the year. We seek to be an educational resource for gardeners who want to create more habitat in their gardens for pollinators.

For a plant sale list or to get on our email list, please contact pickelberry@cruzio.com.



Buckeye butterfly on *Eriogonum fasciculatum*



Green sweat bee on Gaillardia Goblinc Blanket Flower



Monterey State Historic Park Association and the Historic Garden League present the Monterey Garden Tour on

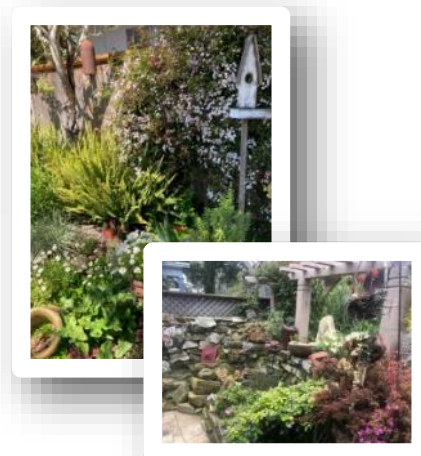
**Saturday, June 10**  
**11am- 4pm.**

Tickets are \$25 per person. Please reserve your tickets online today.

The self-guided tour will feature Casa del Oro Garden at Monterey State Historic Park plus 11 private gardens in the New Monterey Area. These lovely gardens will not only delight your senses but demonstrate rainwater catchment systems, water-wise plantings, and weed suppression methods. A descriptive brochure of the gardens can be found here:

[https://www.mshpa.org/files/ugd/741b1b\\_9184bab071ea4194994361dcf789d658.pdf](https://www.mshpa.org/files/ugd/741b1b_9184bab071ea4194994361dcf789d658.pdf)

A tour map and addresses will be released on June 1, More information at <https://www.mshpa.org/garden>.





# Climate Change is in Our Hands

Little Things Matter



Climate change is in our hands, and the little things you do each day can make a difference in the health of pollinators, people, and the planet.

[www.pollinator.org](http://www.pollinator.org)

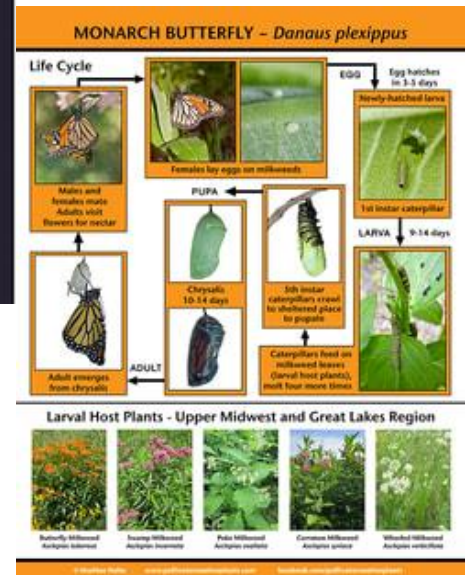
Illustration and design by Carol Schwartz

El cambio climático está en nuestras manos, las pequeñas cosas que hacemos todos los días pueden hacer la diferencia para los polinizadores, las personas y el planeta.

Le changement climatique est entre nos mains, et les petites choses que vous faites au quotidien peuvent faire la différence pour la santé des pollinisateurs, des personnes et de la Planète

ticed ecological horticulture and worked on ecological restorations. She was amazed by the diversity of insects that her native plant landscapes attracted. Joe Lamp'1 did a comprehensive review of her work with which I encourage you to read for a fuller understanding . summarizing her work that I encourage you to read for a fuller understanding (<https://joegardener.com/podcast/all-about-native-bees-heather-holm/>), followed by an even more fascinating review of the latest work and writing on the pollinating role of wasps (<https://joegardener.com/podcast/fascinating-world-of-wasps-with-heather-holm/>).

Heather has many free resources (handouts) for educational purposes at <https://www.pollinatorsnativeplants.com/plant-lists--posters.html>.

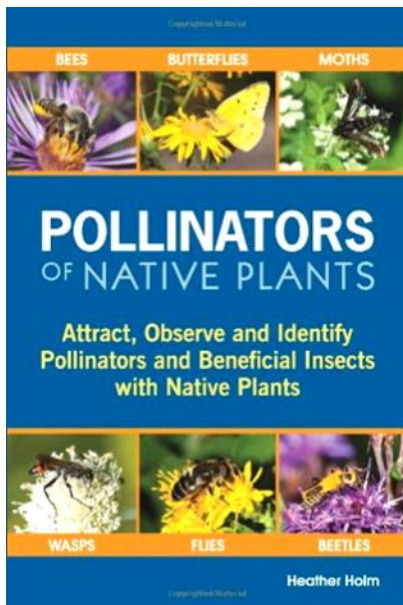


**SUPPORT NATIVE BEES** Loam Soil

Fragrant Phlox <i>Ageratum houstonianum</i>	Silt Goldenrod <i>Solidago rigida</i>	Purple Prairie Clover <i>Dalea purpurea</i>	Pale Purple Coneflower <i>Echinacea pallida</i>
Golden Alexanders <i>Zizia aurea</i>	Hoary Vervain <i>Verbena stricta</i>	Black Eyed Susan <i>Rudbeckia hirta</i>	Meadow Blazingstar <i>Liatris scapularis</i>
Sunflowers <i>Helianthus spp.</i>	Smooth Beardtongue <i>Pentstemon digitalis</i>	Wild Bergamot <i>Monarda fistulosa</i>	Yellow Coneflower <i>Rudbeckia hirta</i>

© Heather Holm  
PollinatorsNativePlants.com  
f. PollinatorsNativePlants

**PLANT NATIVE PLANTS**



National Pollinator Week is June 19-25, so the June issue of this newsletter might be a bit pollinator-centric.

If you like flowers, you love pollinators, since you can't have one without the other. Flowers and their pollinators create seeds, fruits, and nuts—actually a third of the food we eat. We admire the butterflies adorning our gardens, but with this book, we also learn to value other insects attracted to and pollinating flowers—bees, wasps, moths, flies and beetles.

The bulk of the book describes the best pollinator-attracting plants and the interactions between their flowers and the pollinating insects.

The award-winning author, biologist, pollinator conservationist Heather Holm, grew up in Canada and now lives in Minnesota. She had an interest in plants more than insects for many years and studied horticulture and biology. Later in life, she prac-

Pollinators of Native Plants: Attract, Observe and Identify Pollinators and Beneficial Insects with Native Plants.

By Heather Holm



# SOFT LANDINGS

**Soft landings** are diverse native plantings under keystone trees (or any other regionally appropriate native tree). These plantings provide critical shelter and habitat for one or more life cycle stages of moths, butterflies, and beneficial insects such as bumble bees, fireflies, lacewings, and beetles. In addition to plants, *soft landings* also include leaf litter, duff, and plant debris.

Oaks are universally the top keystone trees that support moths and butterflies. Across the United States, more than 940 types of caterpillars feed on oaks (*Quercus*).

Red-banded hairstreak

TOP GENERA  
OAK  
WILLOW  
CHERRY  
PINES  
POPLAR

Luna moth

Great oak dagger moth

Eastern buck moth

Many of the moths and butterflies that feed on oak trees must complete their life cycles in the duff and leaf litter (i.e., *soft landings*\*) near or beneath the tree, or below ground.

Blinded sphinx moth

Juvenal's duskywing

Hag moth

Creating *soft landings*\* under the dripline of oaks (as well as any other tree) invites all kinds of beneficial insects to complete their life cycles in your yard.

Skiff moth

Edwards hairstreak

Pink-striped oakworm

A number of beneficial insects such as fireflies, bumble bees, beetles, and lacewings need *soft landings* to survive.

Planting intentional *soft landings*\* under keystone trees builds healthy soil, provides food for songbirds and pollinators, sequesters more carbon than turf grass, and reduces time spent mowing.

Other ways to support insects that spend a phase of their life cycle beneath trees include eliminating landscape fabric and decreasing mowing to reduce soil compaction



Funded by a grant from Wild Ones Minnesota. ©2021 Heather Holm and Neighborhood Greening. Developed in consultation with Desiree Narango, Ph.D.; artwork by Elsa Cousins. \* For more on creating soft landings under trees, visit: [www.PollinatorsNativePlants.com/softlandings.html](http://www.PollinatorsNativePlants.com/softlandings.html)







We are so pleased to once again gather together in community and host a Sustain Supper at Natural Bridges Farm. This event will take place on Saturday, June 17, beginning with passed appetizers and wine at 4pm, and will feature a delightful, multi-course meal, utilizing produce grown on our farm in our programs, cooked by a team of area chefs. In addition to the signature farm-to-table meal, the event will feature local beverages, live music, a farm tour and an engaging program of speakers, including our keynote speaker, Dick Peixoto, owner of Lakeside Organic Gardens, the largest family-owned and operated solely organic vegetable grower/shipper in the USA. You can read more about Dick below. Our MC for the evening will be Jess Brown, Executive Director of the Santa Cruz County Farm Bureau.

All proceeds from the Sustain Supper benefit the Homeless Garden Project's core transitional employment program for people experiencing homelessness. Over 30+ years HGP has refined the successful year-long program to provide earned wages for work, hands-on job training and support services in an effort to help trainees obtain stable employment and housing. On average, 90% of trainees obtain stable housing and employment within 3 months of graduating.

Natural Bridges Farm, located on Santa Cruz's Westside, has been operated by the Homeless Garden Project since the mid-90's. Please note, it is an active working farm, so please wear comfortable shoes

for uneven ground.

**About our speaker: Dick Peixoto** was born and raised in the Pajaro Valley on the Central Coast of California. At the age of 10 he used to ride along with his dad who worked for a commercial fertilizer and pesticide company. Visiting the local farms is what peaked his farming interest that would become his life's passion.

When Dick was a senior in high school he bought two old tractors and started his farming career. He rented 40 acres in 3 different locations and grew conventional pickling cucumbers and green beans. Over the next 20 years he grew that operation to 2000 acres of conventional vegetables. While operating on narrowing margins year after year he became interested in organic farming and envisioned using a lot of what he learned conventionally to help set up systems to make organic farming more efficient.

In 1996 Dick began the transition to organic farming with one single 50 acre ranch and 20 crops. Operating that business as Lakeside Organic Gardens since 1996, he increased organic acreage and introduced new vegetables annually, now growing over 50 different varieties year-round. Today, Lakeside Organic Gardens is the largest family-owned and operated solely organic vegetable grower/shipper in the USA. Producing over 55 commodities year-round, Lakeside Organic Gardens are

committed to being 100% organically grown in California

About our MC: Jess Brown serves as executive director of the San Mateo/Santa Cruz/Santa Clara Counties Farm Bureaus and the educational organization, Agriculture. Jess' involvement in the community includes board member of Leadership Santa Cruz County. He served as Chair of the Tannery Arts Center and Goodwill Central Coast and president of the Community Foundation of Santa Cruz County, Monterey Museum of Art and Cabrillo College Foundation.

Jess was a founder of Ag Against Hunger that distributed, during its 29 years, close to 300 million pounds of donated local produce to people in need. Jess is a graduate of three state and national leadership programs which allowed him to study in Japan, China, Hong Kong, Germany and Denmark. Jess has volunteered five times to teach organizational skills to re-settled farmers in Zimbabwe. He has also taught financial skills to agro-dealers in Mozambique.

Cost is \$195 per person. Buy your ticket at <https://www.eventbrite.com/e/summer-sustain-supper-registration-616498332107>.





PAJARO VALLEY PRESENTS

# Sculpture IS: In the Garden

Sierra Azul Nursery & Gardens  
2660 East Lake Avenue  
Watsonville

Jamie Abbott - Susana Arias - Jeff Arnett - Michael Bashista  
Tory Beale - Tony Berumen - Lucia Bruer - Trudi Burney - Jay Capela  
Lee Cavanaugh - Paul Cheney - Jennifer Cherk - Liam Cliff  
Maurice Connolly - Kathleen Crocetti - Barbara Downs - Leonard Groner  
Roger Heitzman - Matt Hill - John Hylton - Kristen Kolbeck - Ron Lion  
Franco Di Mayo - Kirk McNeil - Susan Megorden - Keith Millar  
Ann Morhauser - David Mudgett - Geoffrey Nicastro - Nancy Niles  
Jeff Owen - Rosy Penhallow - Priyanka Rana - Jane Reyes  
Pierre Riche - Jeanie Rizzuto - Jewel Rogers - Robin Russell  
Nora Sarkissian - Susan von Schmacht - Cynthia Siegel - Judy Stabile  
Richard Starks - Lynne Todaro - Aaron Vandekerckhove  
Susan Wagner - Jenni Ward - Christine Watten - Dag Weiser

Curators: Susana Arias, Hedwig Heerschop & Jeff Rosendale

June 1 - October 31, 2023

## ***Sculpture IS: In the Garden 2023***

**Exhibit Dates: June 1 - October 31**

Sierra Azul Nursery & Garden  
2660 East Lake Ave, Watsonville

*Sculpture IS: In the Garden* is back!

Our annual outdoor sculpture exhibit at the beautiful Sierra Azul Nursery & Garden opens June 1.

Curators Susana Arias, Hedwig Heerschop, and Jeff Rosendale selected over ninety sculptures created by forty-nine artists and collaborators. Be sure to stop by this summer and enjoy a beautiful day at the garden!

Sierra Azul is open daily 10am-5pm

## **Board News**



We welcome Joanna Hall back to the Board of Directors. She will assume the position of Hospitality Chair, greeting you and new members at our meetings.

The next Board meeting will be at Joanna's home and garden. Come for a potluck and a garden tour! June 26, 6:30 p.m., 2200 Cox Rd Apts.



**de Young \**  
**\ Legion of Honor**  
fine arts museums  
of san francisco



# ONE WEEK ONLY: BOUQUETS TO ART

Experience the de Young museum erupt with fresh flowers For Bouquets to Art. From June 6-11, see more than 100 floral displays in conversation with artworks from the de Young's permanent collection, designed by the Bay Area's leading floral designers.

<https://tickets.famsf.org/events/283/detail/63d6e024ef63ac4b918fb8d6>

*Proceeds from this beloved floral fundraiser, now in its 39th year, help underwrite exhibitions, conservation projects, and education programs at the de Young and Legion of Honor.*

## Enhance Your Visit



### **Bouquets to Art Trunk Shows**

Jun 6-11 \ 9:30 am-5:15 pm

Take home floral-inspired treasures by 57 local artisans and designers, one on each day during Bouquets to Art.

[Learn More](#)



### **Punk Ikebana**

Tuesday, June 6 \ 2 pm

Critically acclaimed artist and floral designer Louesa Roebuck riffs on classic rules of Japanese flower arrangement using foraged flora from the San Francisco Botanical Garden.

[Learn More](#)

*Tickets (\$55) include general admission entry to Bouquets to Art, and the Kehinde Wiley and Ansel Adams exhibitions.*



### **The Garden and the Artistry of Floral Design**

Wednesday, June 7 \ 2 pm

Gabriela Salazar will talk about how growing her own garden has changed how she designs flowers, illustrating what fosters the artistry behind soft, romantic arrangements.

[Learn More](#)

*Tickets (\$55) include general admission entry to Bouquets to Art, and the Kehinde Wiley and Ansel Adams exhibitions.*







## ORDER POLLINATOR WEEK SHIRTS!

The limited-edition Pollinator Week Shirts are here! This year's design features artwork from the 2023 Climate Change is in Our Hands Poster by Carol Schwartz. Order yours today and show your support for pollinator conservation. Don't forget to show off your new shirt during Pollinator Week from June 19 -25 to help raise awareness for pollinator health and well-being! <https://www.bonfire.com/store/pollinator-partnership/>



[www.thegardenersclub.org](http://www.thegardenersclub.org)

[lisebixler@sbcglobal.net](mailto:lisebixler@sbcglobal.net)

Lise Bixler, 457-2089

Newsletter Writer/Editor

662-8821

[jhavelock@sbcglobal.net](mailto:jhavelock@sbcglobal.net)

Joanna Hall

Hospitality

[Suzanne.bottomline@gmail.com](mailto:Suzanne.bottomline@gmail.com)

Suzanne Caron 609-6230

Membership

[denagonsalves@hotmail.com](mailto:denagonsalves@hotmail.com)

Dena Gonsalves -345 -1764

Treasurer

ABarclay@aol.com

April Barclay, 688-7656

Secretary

[mlouisbsa@gmail.com](mailto:mlouisbsa@gmail.com)

Morgan Louis 245-5522

Vice President & Publicity

[cherrylea@comcast.net](mailto:cherrylea@comcast.net)

Cherry Thompson, 475-0991

President

P.O. Box 3025, Ben Lomond CA 95005

The Gardeners' Club

[www.etsy.com/shop/curiousprintpattern](http://www.etsy.com/shop/curiousprintpattern).

Our front page logo is graciously shared with us by artist Lisa Zador. Order a print or see more of her work at her Etsy shop

Dues are \$15 per calendar year. Make check to "The Gardeners' Club" and mail to P.O. Box 3025, Ben Lomond, CA 95005. Meetings are held at 7:00 p.m. on the 2nd Thursday of each month at the Aptos Grange, 2555 Mar Vista Dr., Aptos

It's easy-peasy to join our club!

